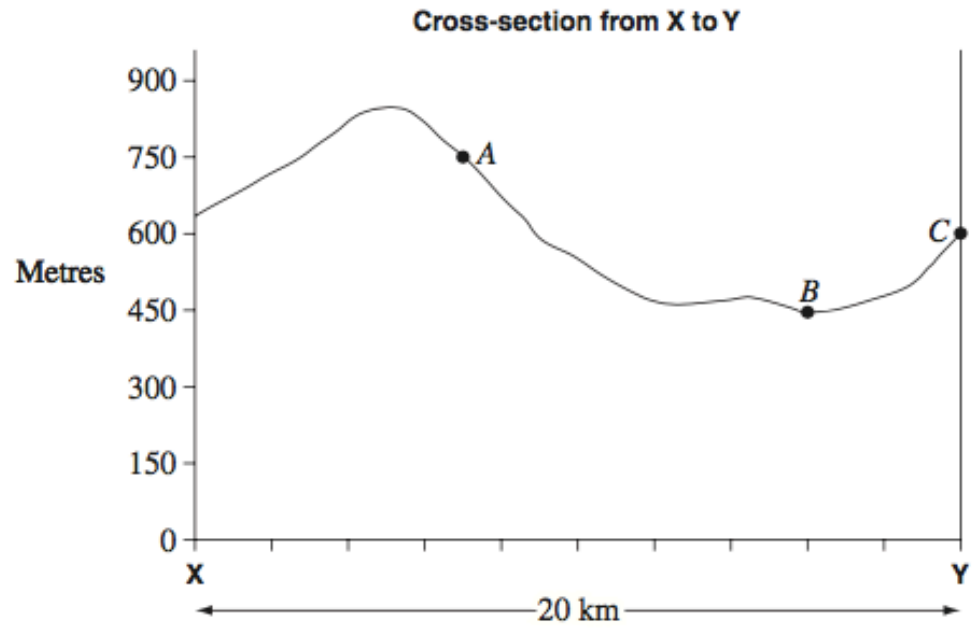




TOUGH HSC SKILLS...

WHY BOTHER?

- Moving students up bands requires they can complete the skills that other can't.
- Confidence with these skills can translate into easy marks.
- These skill are at the core of Geographic inquiry
 - *This should mean incorporating skills into lessons regularly.*

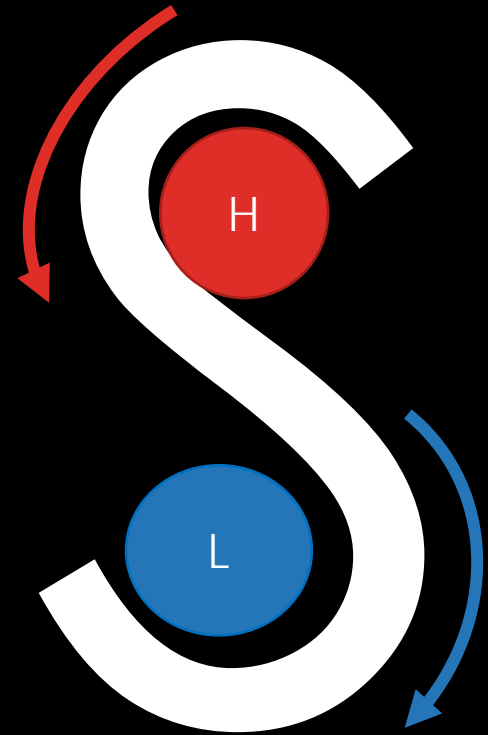


- (a) State the local relief between point A and point C. 1

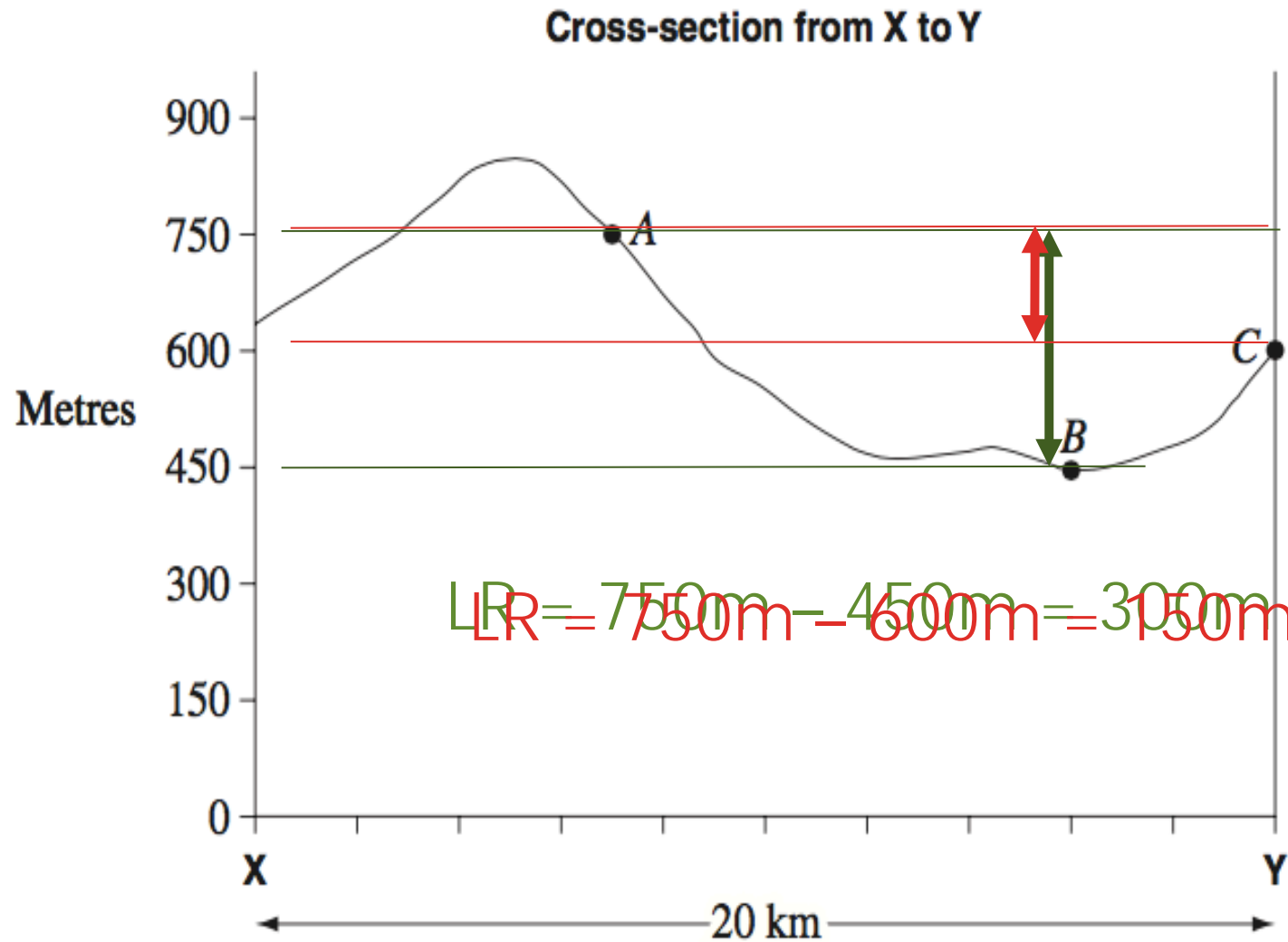
- (b) Calculate the average gradient between point A and point B. Show working. 2

- (c) Calculate the vertical exaggeration of the cross-section. Show working. 2

WHAT MAKES THEM TOUGH?



Question 21 (5 marks)



LOCAL RELIEF

- LR = Highest point – Lowest point...
- But local relief needs to be taken across the whole transect.

(a) State the local relief between point A and point C.

GRADIENT

Unsure of what this means
on a map or source

• $G = \text{Rise} / \text{Run}$

Unsure of how to complete the maths
and how to present the answer

Easier to find on a map

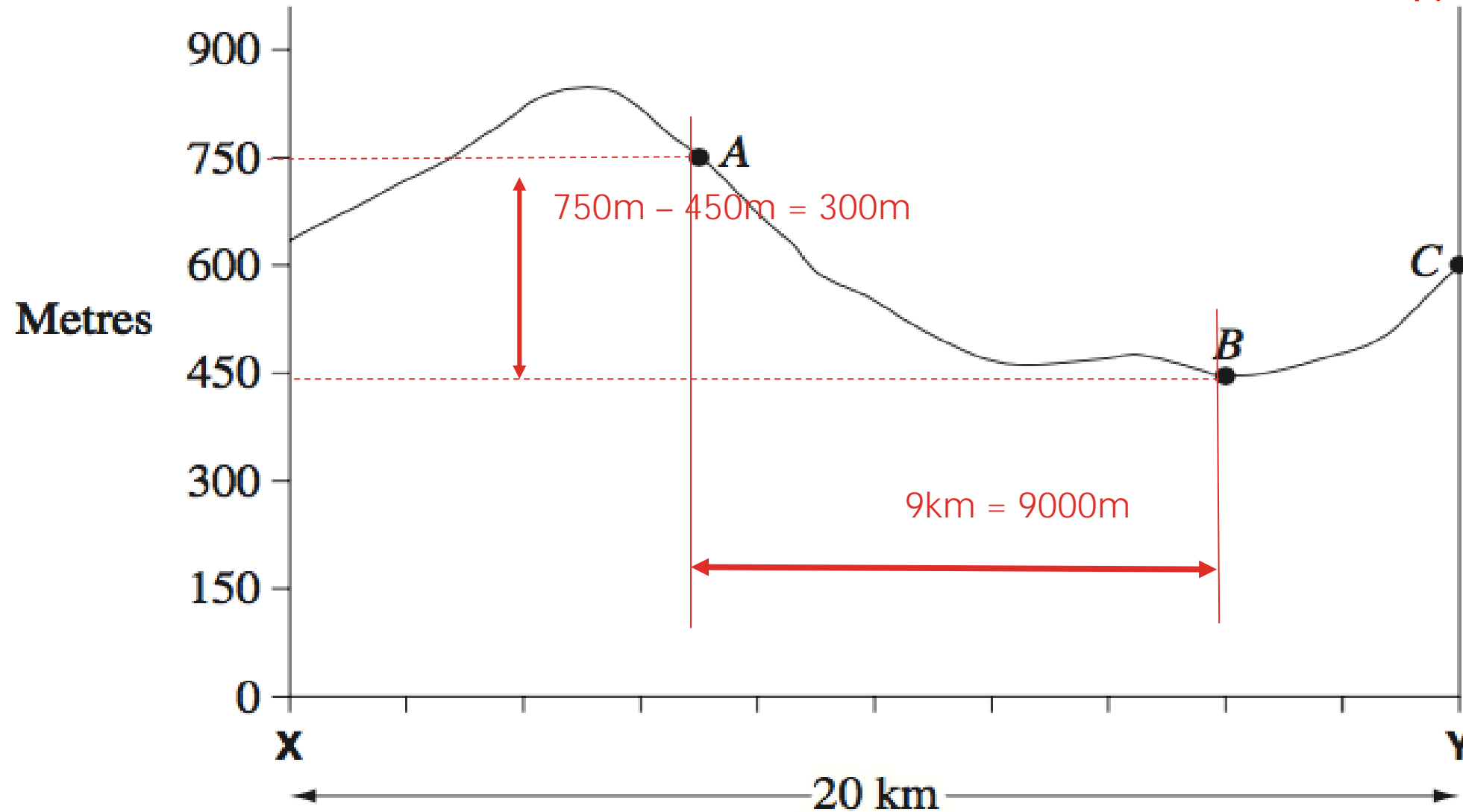
• $G = \text{Change in Height (m)} : \text{Distance(m)}$

Easier to simplify

Question 21 (5 marks)

Gradient = 300m : 9000m
= 1 : 30

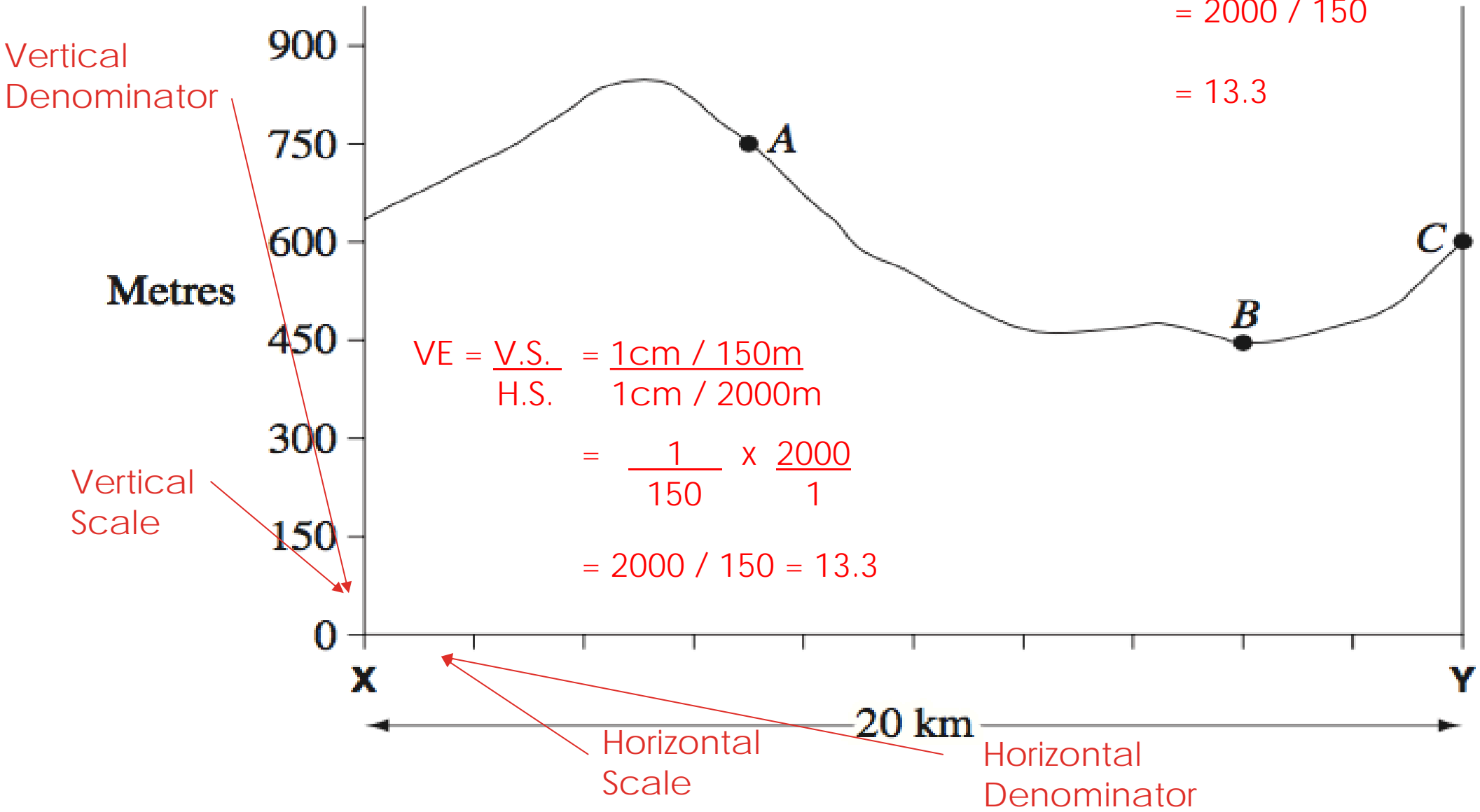
Cross-section from X to Y



Question 21 (5 marks)

$$VE = \frac{\text{Horizontal scale denominator (m)}}{\text{Vertical scale denominator (m)}}$$

Cross-section from X to Y



$$VE = \frac{\text{V.S.}}{\text{H.S.}} = \frac{1\text{cm} / 150\text{m}}{1\text{cm} / 2000\text{m}}$$

$$= \frac{1}{150} \times \frac{2000}{1}$$

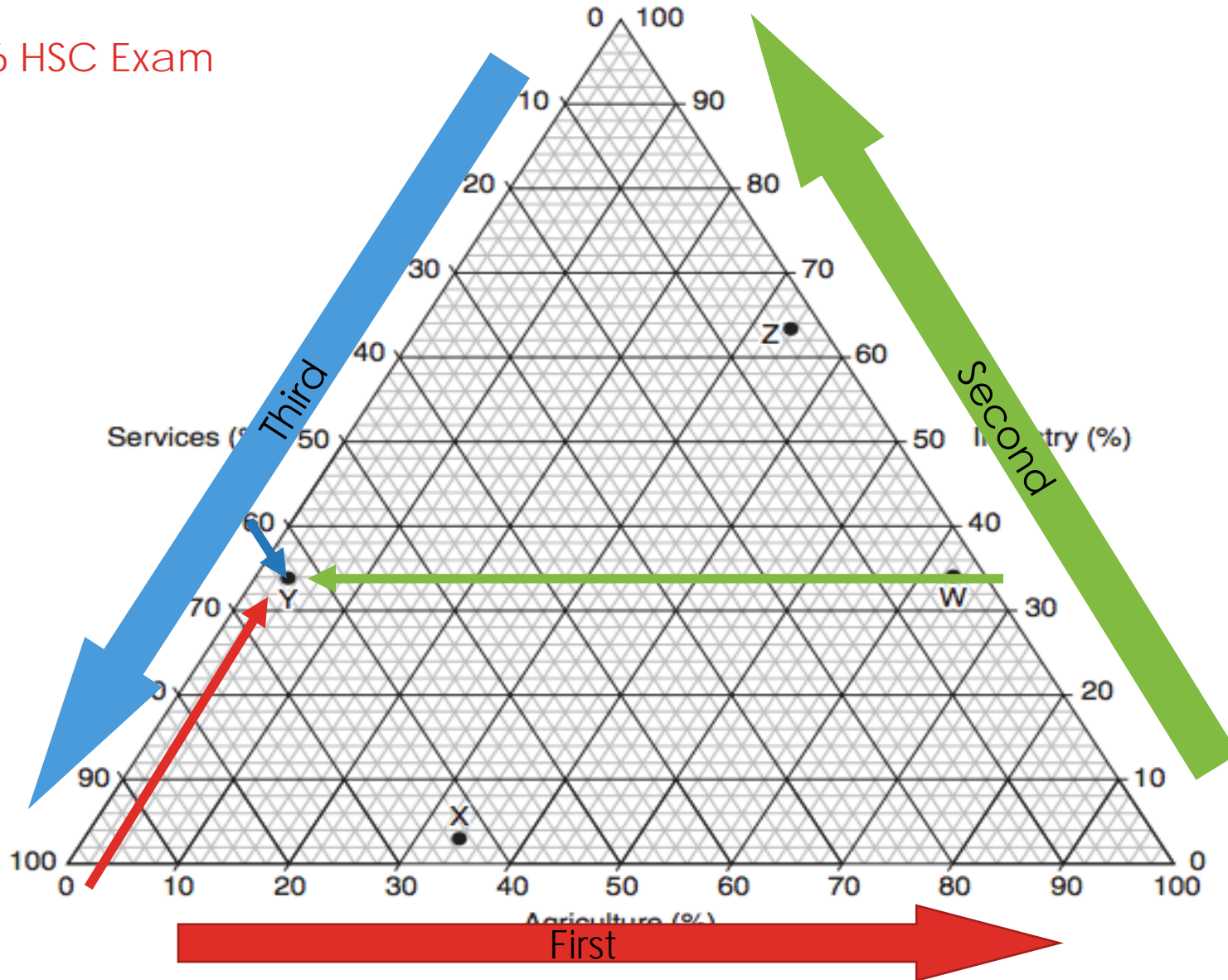
$$= 2000 / 150 = 13.3$$

$$= 2000 / 150$$

$$= 13.3$$

16 A ternary graph showing the employment mix by sector for the countries W, X, Y and Z is shown.

2016 HSC Exam



TERNARY GRAPHS

- The three figures must add up to 100%
- Knowing which axis goes in which direction is the trick...

+ 3%

+ 34%

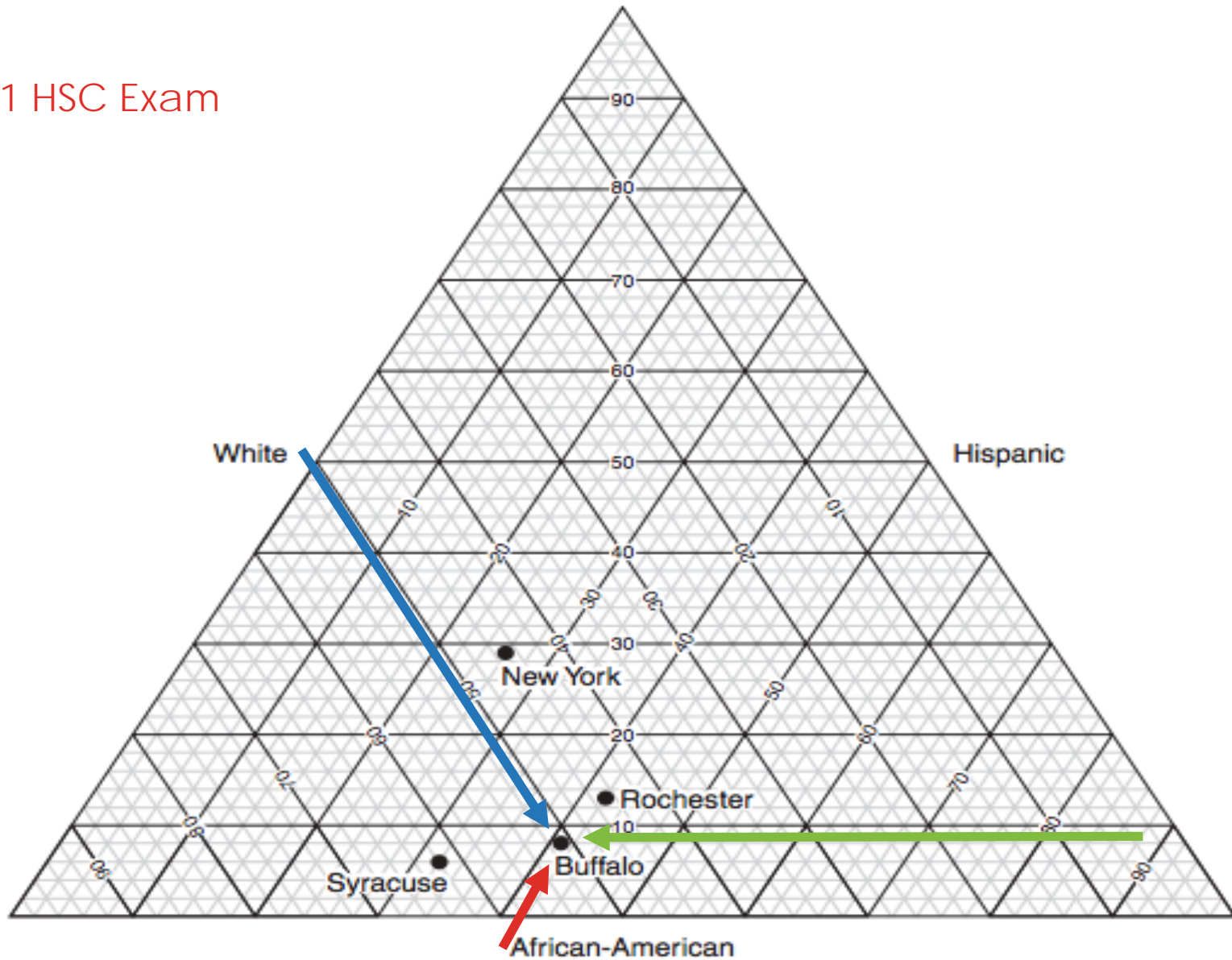
+ 63%

=100%

Which country has 3% of its people employed in agriculture, 34% in industry and 63% in services?

Percentage of Population by Ethnicity – selected cities in New York State (2005)

2011 HSC Exam

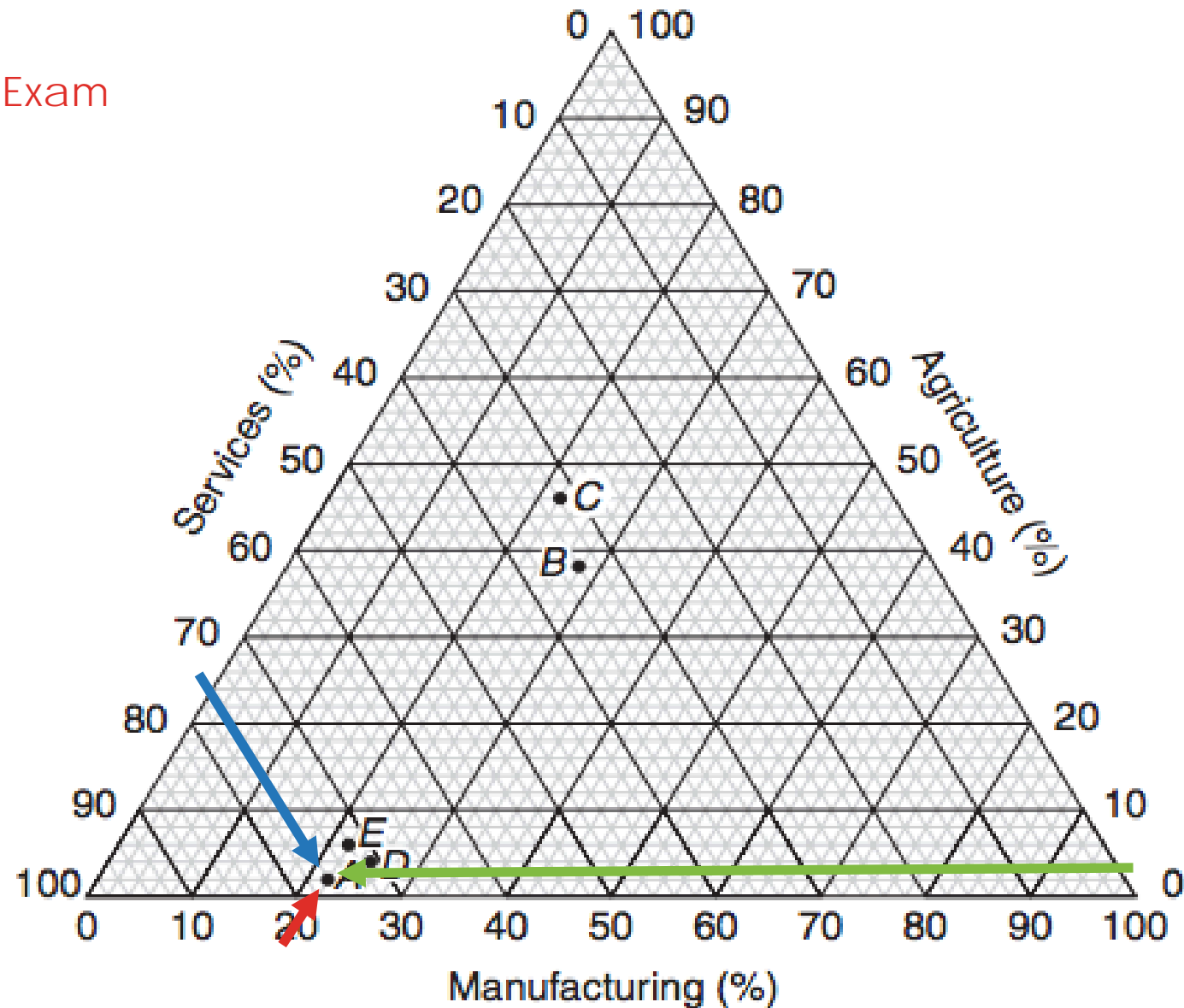


Source: US Census Bureau

+ 41%
+ 8%
+ 51%
= 100%

Refer to the ternary graph to answer Questions 18–19.

Employment by industry sector for selected countries, 2011



+ 22%
+ 2%
+ 76%
= 100%

TAKE AWAY MESSAGES

- Help to make it easy for your students.
 - Simplify a formula if you can
- Don't let them develop any misconceptions.
- Develop some easy mnemonics
- Incorporate skills into delivery of content... frequently!